

...now 4D!

3D and 4D upgrade for your Ultrasound scanner

SONOCUBIC[®]

Clinical value with amazing photorealism



- SONOCUBIC[®] is the breakthrough software technology that processes 2D images of your actual ultrasound scanner to obtain High Resolution Multiplanar Volumes, photorealistic 3D images and 4D movies.



Medge Platforms Inc. NY, USA

www.sonocubic.com

Just 3D! Just Amazing!

- SONOCUBIC® "Full" and "Just 3D" package options produce amazing photorealistic images of the anatomy. When easy of use and speed is needed, SONOCUBIC® Just 3D is the perfect solution. SONOCUBIC® Full version delivers superb image quality and the highest rate of success especially with difficult cases.



SONOCUBIC - Medge Platforms, Inc.

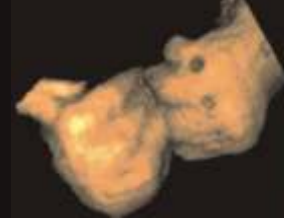
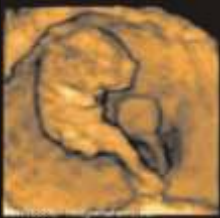


SONOCUBIC - Medge Platforms, Inc.



SONOCUBIC - Medge Platforms, Inc.

- SONOCUBIC® is photorealism in High Risk OB



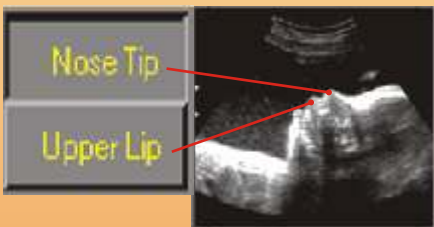
- SONOCUBIC® exclusive technologies

- RAPID SEQUENTIAL 3D

The exclusive SCAN & SEE technology. During a regular 2D study, the user steps on the pedal, sweeps the probe across the anatomy and SONOCUBIC will deliver immediately a perfect 3D image. SCAN & SEE allows the user to render as many 3D's as needed without even touching the computer.

- ANATOMIC BOX®

Could you see it on 2D? Just click! Anatomic Box® is an auto-alignment system based on 2D anatomic land-marking. The artificial intelligence automatism simplifies the workflow with quality results. Realignment, resizing, surrounding tissue auto-dissection, amniotic fluid thresholding and a variety of other sophisticated procedures are automatically performed. Marking anatomic points on the 2D image simply makes 3D ultrasound easier!



- FACE ARRAY®

Exclusive stress-free acquisition provided by unlimited length of captures and not affected by variations in speed. Just one probe sweep, is enough for immediate 3D rendering. Each time the Sonographer steps on the footswitch, SONOCUBIC acquires another volume of anatomy.



It's easy to pick the best volume afterwards.

- (FREE HAND) 4D: *Animated anatomy*

SONOCUBIC generates a movie accumulating all the individual 3D's into one single movie. The animation can show the fetal activities in slow motion. The "not real time" 4D delivers high resolution detail quality. The final 4D can be recorded as an AVI file to be seen on any PC.



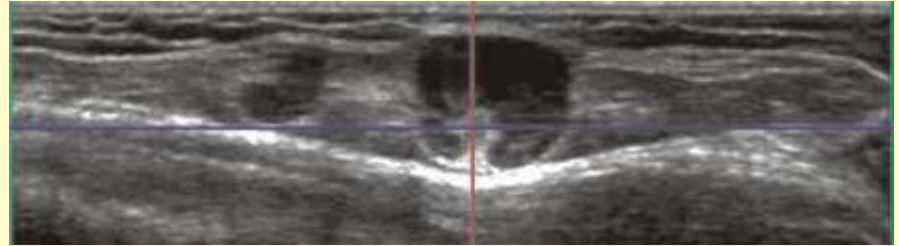
The extreme clinical value

See the impossible!

1024 lines resolution

SONOCUBIC[®] compounds ultrasound image volumes from 2D image acquisitions. The multitude of planes contained within the resultant cubic volume are then immediately available for interrogation and navigation. Those planes normally hidden to conventional 2D scanning are now available: See the impossible!

SONOCUBIC[®] exclusive 1024 lines resolution Multiplanar Reformatting (MPR) has the ability to display any desired plane from a volume of anatomy. The CORONAL, SAGITTAL and AXIAL synchronized views unfold any subtle spot of the block volume.



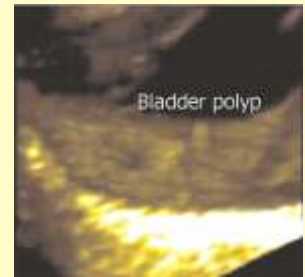
Gynecology protocols

SONOCUBIC[®] has a comprehensive package for Gynecology. When the coronal plane morphology of a very anteverted/retroverted uterus is hard to define, SONOCUBIC(R) is the answer. The MPR will show a perfectly aligned coronal plane of the endometrium, along with the strict transverse and sagittal. This make the septate/bicornuate differentiation a fast and simple task. The 2D navigation also provides exquisite information of polyps, cyst, IUD location, fibroids and more...



Radiology service

Gall bladder, cysts, breast implant evaluation, bladder, blood vessels and many other fluid-tissue interfaces are perfect to be rendered in 3D surface mode. Subtle details, hard to see in 2D are more evident for the patient and the surgeon. The High Resolution MPR provides panoramic images of muscles, tendons, organs.



Post-processing

VOLUTRACER[®]: Exclusive stereotactic dissector, helpful when in low amniotic fluid conditions. For High Risk OB this is crucial to uncover the findings, regardless the conditions of that particular patient. VOLUTRACER[®] delivers the highest rate of success of the industry.

Other advanced ultrasound digital features:

- on line tutorials
- remote assistance
- archiving, printing
- Dicom and more

Telemedicine using a phone modem

Low cost Internet connections are used to e-mail the 3D movies and 2D Ultrasound data to referring physicians. A seamless integration with MS OUTLOOK will make it as easy as one click to forward a large number of frames at once. The other party only needs a PC with the standard Windows Media Player to play the movie at full screen.



Medge Platforms Inc. NY, USA

Specification summary:

SONOCUBIC® version 3.0 is a complete ultrasound and multi-modality solution for medical imaging. It has 2 options, Just 3D and Full packages. It is intended to acquire, retrieve, process, print and store studies incoming as 2D series from Video, FireWire DV, DICOM or AVI (Microsoft's movies format).

Uses "FREE HAND" technology, sensor less, to render 3D (Surface, Transparent and MIP) still images, 3D "cine's", Rapid Sequential 3D, free-hand 4D movies, Multi Planar reformatting, Multi Planar Cine, side by side, linked, 3D CUBE, and Bi-CUBE.

Can work with "extended volumes" including thousands of frames to give PANORAMIC IMAGES.

Other features:

DICOM print is a standard feature in the application. It uses a Multiformat selector window to compound the image matrix. DICOM STORE, Import and Export is available as an option in order to connect to a PACS server, or read DICOM files digitally.

E-mail, Remote Assistance, Storing are standard features included in the 3.0 version.

Resolution is user selectable up-to 1024 lines matrix.

Multiplanar reformatting:

- * Three Orthogonal planes with "cross hair" correlation.
- * Displayed With or without the 3D rendered image at users option
- * User selectable MPR resolution up to 1024x1024.
- * Complete freedom of movement and navigation, including zoom, pan, rotation and pin-pointing.
- * Multiple MPRs linked to show the same anatomy in a "side by side" mode.
- * Very large anatomy MPR display.(Panoramic)

Editing:

- * Original 2D "raw data" preserved
- * Virtual unlimited undo's stored in the FACE ARRAY® file.
- * 2D VOLUTRACER® (all the way through 2D cropping) using deformable, rectangular, ellipse or irregular shapes.
- * Frame by frame cropping
- * 3D VOLUTRACER® as erase "small" to erase structures within the volume using "stereotactic" assessment.

General:

- * User programmable color display tables.
- * All the pre and post processing stored in the FACE ARRAY® file.
- * Image Annotation with size, colors and font selectable.
- * Zoom, full screen and pan of windows.

2D DATA INPUT:

Options:

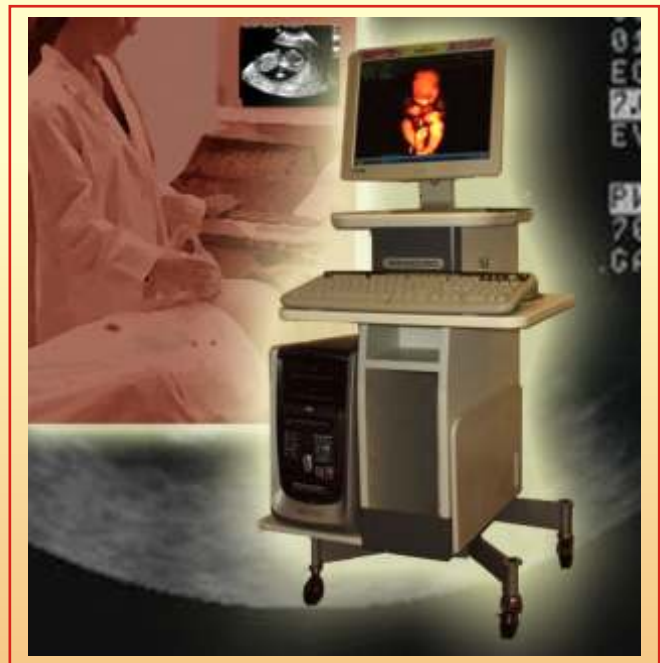
FIREWIRE DV ready

Composite Video using WDM grabber board.

S-VHS Video using WDM grabber board

Data allocated in memory from a PC based Ultrasound scanner

- * Selectable Video Capture Resolution: 128x128 256x256, 512x512 and 1024x1024, at 30 FPS (NTSC) or 25 FPS (PAL)
- * Different modes for acquisition: Even Only, Odd only, Full Frame, Duplicate Lines, resizable.



©2003 Medge Platforms Inc. All rights reserved



Manufactured by Medge Platforms Inc.
100 Park Ave. Suite 1600, New York, NY 10017

info@medgeplatforms.com
www.sonocubic.com